



# ADOBE CREEK EMERGENCY MEETING AGENDA

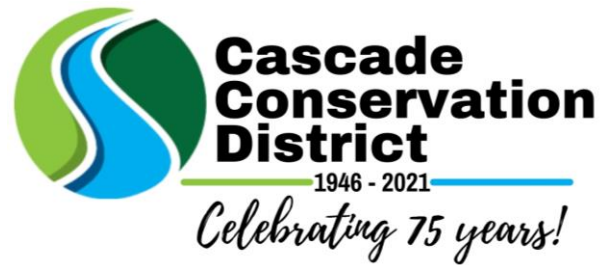
JUNE 8, 2021

11 am at Parker Farms

1. Introductions
  - a. Conservation District and SRWG
  - b. Groups represented at this meeting
2. Overview
  - a. Background – history of issues at this location and approaches to deal with issues
  - b. Current situation – drone footage from May 18 and changes since that date
  - c. Applied Geomorphology recommendations – Channel Migration Zone team comments
3. Short-term approach
  - a. Crowd-source ideas for “band-aid” to deal with current threats
  - b. Permitting needs
  - c. Plan to implement
4. Long-term approach
  - a. CCD and SRWG will continue applying for funds for modeling, analysis, and planning
  - b. Once planned approach is identified, can apply for implementation and permitting funds
  - c. Will take multiple years and be expensive; will need to follow CCD and SRWG procurement policies (state or federal requirements)
  - d. Will require matching funds or in-kind contributions
5. Action
  - a. Feedback from all groups represented regarding next steps

# Adobe Creek Emergency Meeting

June 8, 2021































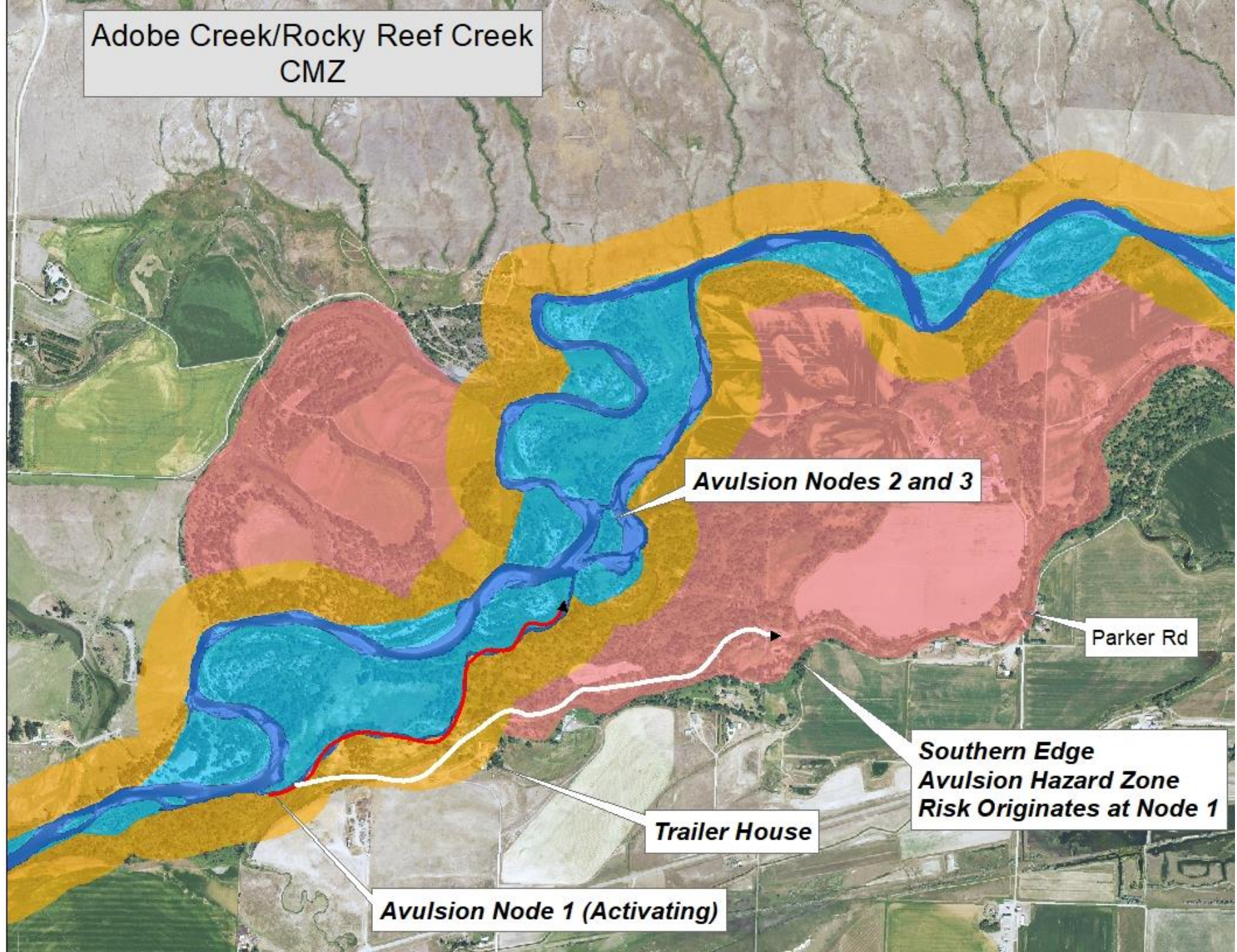








Adobe Creek/Rocky Reef Creek  
CMZ



*Avulsion Nodes 2 and 3*

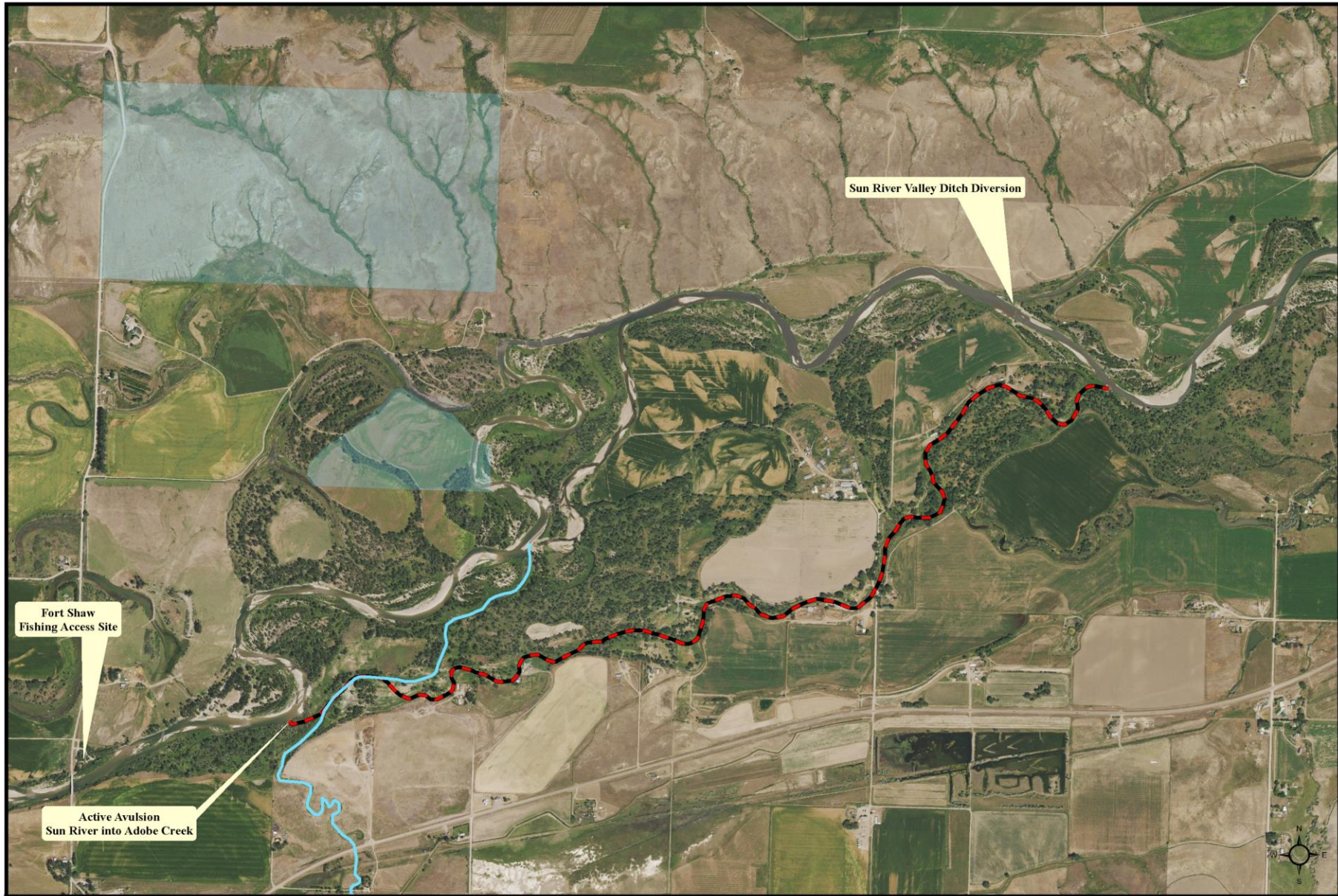
Parker Rd

*Southern Edge  
Avulsion Hazard Zone  
Risk Originates at Node 1*

Trailer House

*Avulsion Node 1 (Activating)*





0 0.125 0.25 0.5  
Miles

Date: 5/19/2021  
Background: 2019 NAIP Imagery  
Projection: NAD83 Montana State Plane FIPS 2500

**SUN RIVER WATERSHED GROUP**

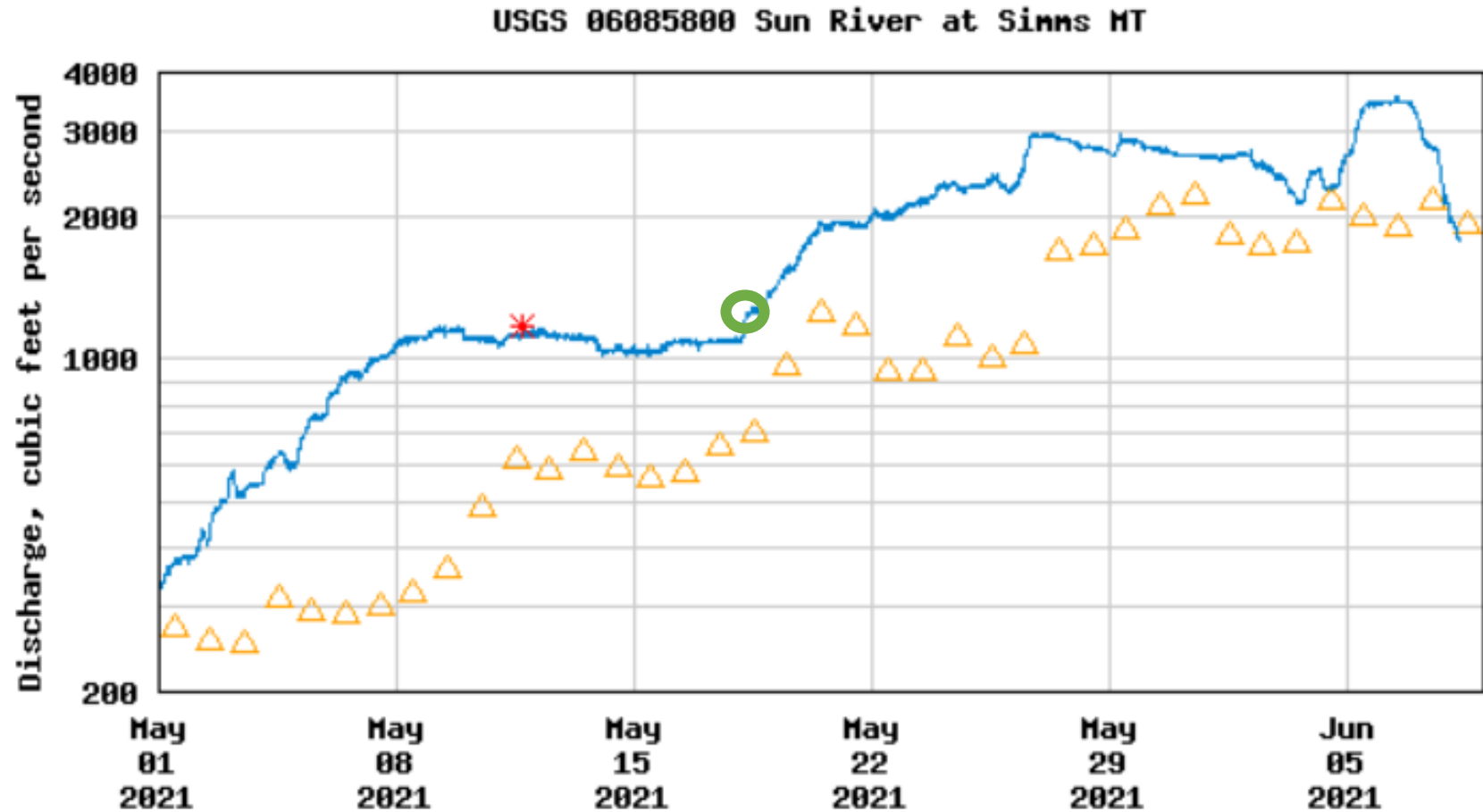
- Adobe Creek
- Potential Avulsion Risk
- Montana State Trust Lands





# Discharge, cubic feet per second

Most recent instantaneous value: 1780 06-08-2021 07:30 MDT



----- Provisional Data Subject to Revision -----

- △ Median daily statistic (38 years)
- \* Measured discharge
- May 18, 2021
- Discharge



# Applied Geomorphology comments:

- This is a lot of water coming through a narrow point, likely due to slope
- Narrow breach easier to treat – recommend big wood, preferably at lower flows, but sooner is better than later
- May be difficult to prevent Sun River from getting into Adobe Creek
- Adobe Creek channel is undersized for this much water
- Previous treatments in this location have failed in the past and headcuts had established that led to breach (from CMZ Report)



1995

# Lower Adobe Creek

Feet

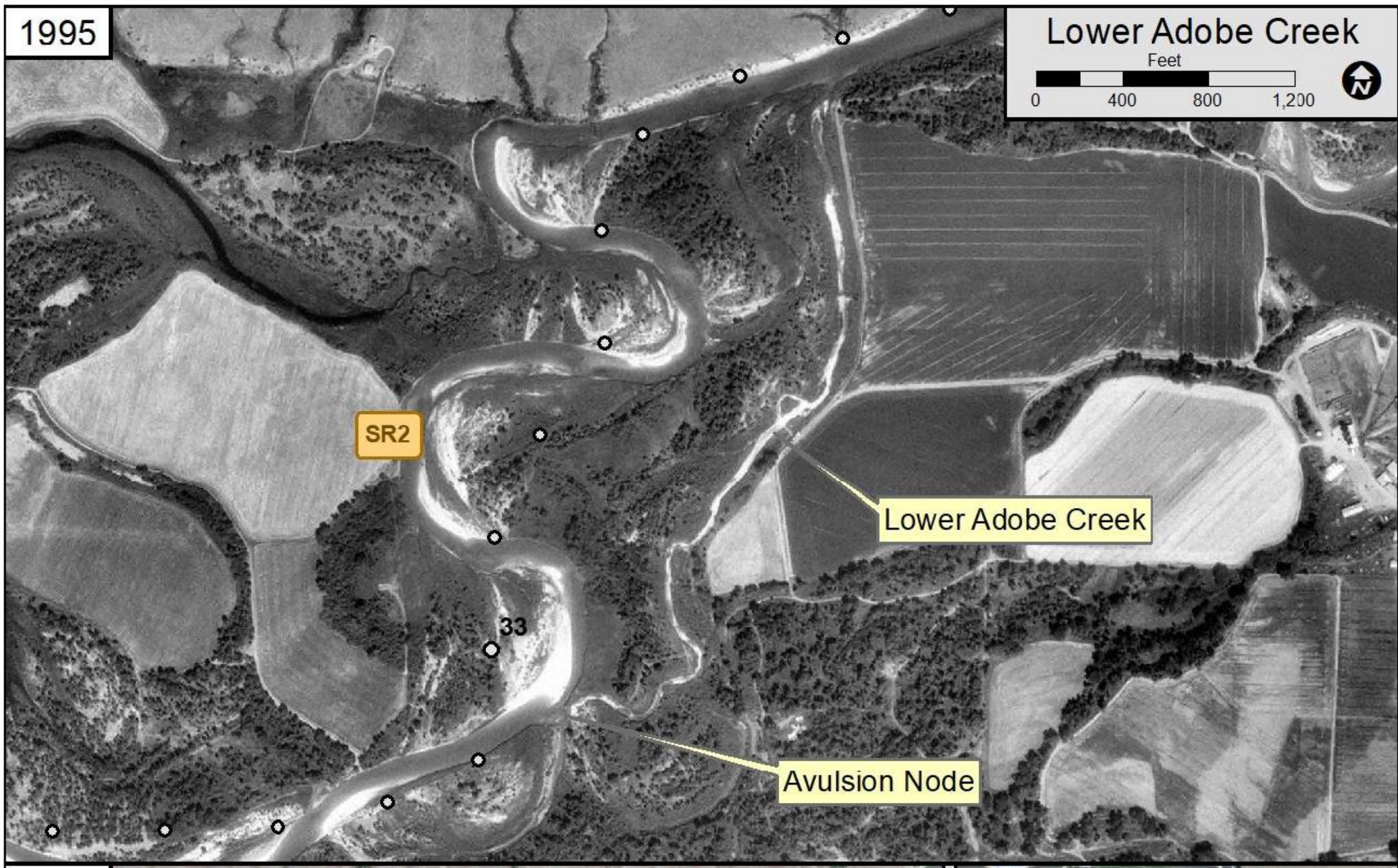


SR2

Lower Adobe Creek

33

Avulsion Node





2019



SR2

Lower Adobe Creek  
(Captured)

Avulsion Node

33